



# ViperVenom EX

## Industrial Camera Enclosures

### For Class I Division II Environments

A hazardous location can be an industrial or commercial environment specifically designed in the National Electrical Code (NEC) in which flammable or explosive gases, liquids, or dusts may be present. These explosive agents may be present at all times, only during abnormal operations, or only when components or processes fail.

Viper Imaging provides solutions for Class I Division I and Division II locations.

#### Class 1 Division 2 Groups C and D

- Optional Pressure switch does not require power

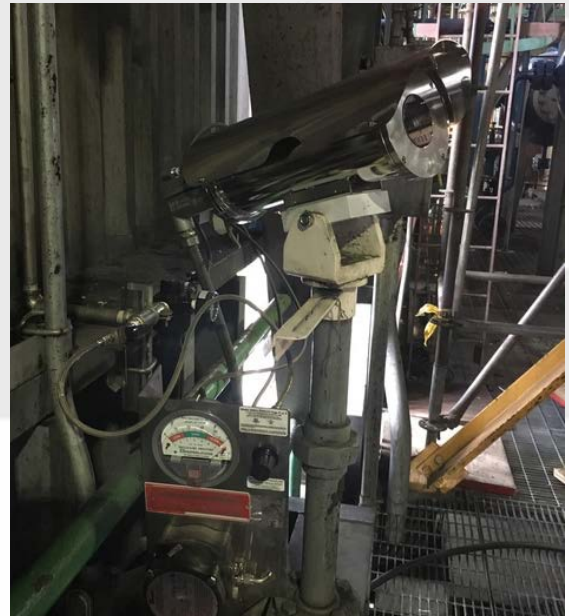
#### Class 1 Division 2 Groups A, B, C & D

- Optional Pressure switch requires power, choose one of the following:
  - 24 VDC @ 3 WATTS
  - 120 VAC @ 4 WATTS
  - 240 VAC @ 11 WATTS

If cooling is required, a vent will be supplied with system. If cooling is not required, a redundant regulator can be supplied to remove the vent.

*Please note: The drawing pictured is typical but can vary based on application and site location.*

# VIPER IMAGING



#### Options:

- Sunshield
- Window Purge (not with sunshield option)
- Environmental temperature maximum with cooling: 140°F (60°C)
- Environmental temperature minimum with cooling: 0°F (-18°C)

#### Air requirements: Instrument Grade Air

- Enclosure Purge 0.1 SCFH @ 0.25" W.C. Minimum
- Cooling 10 SCFM @ 20 PSI Typical (Dependent on Air Inlet Temperature)
- Window Purge: 3 SCFM @ 5 PSI Typical

